
MONTICOLOR



REINTERPRETATIONS

COLLECTION BOOK

Fall • Winter 2025/26

REINTERPRETATIONS

Dopo un'era rassicurante di quiet luxury e cambiamenti discreti vi è la necessità di rivedere e riscrivere le nostre storie. Continuamente stimolati da nuovi contenuti e tendenze in evoluzione, comincia la ricerca di una nuova interpretazione. La nostra identità interiore si esprime in un'esplosione di creatività come risultato di questo tempo mutevole. I confini tra realtà e fantasia si mescolano per spingere ulteriormente la nostra immaginazione.

We are moving from a reassuring era with subtle changes and quiet luxury to the need of writing our own paths and stories. Continuously overstimulated by contents and evolving trends, we are seeking a new interpretation. Creativity bursting as an expression of our truest and inner self is the result of this changing time. The borders between reality and fantasy are blurred to push our imagination even further.

GOURMANDISES

Irreverent • Intimate • Romantic • Unconventional



Five Sense • Colorfur • Saturn • My Sense • Velour • Welove • Live Sense • My Sense • Organic Sense • Velvety

Ispirata all'*enfant terrible* Marie Antoinette, nasce un'intima riflessione sulla realtà e le nostre fantasie più segrete attraverso velluti vintage e textures avvolgenti. Il sognatore romantico riscrive la sua storia personale sfidando le norme di genere e le convenzioni con inusuali giustapposizioni di elementi. Un nuovo tipo di sofisticazione irriverente è interpretata da mischie di cashmere, effetti pelosi e filati dalle sembianze di zucchero filato.

Inspired by the enfant terrible Marie Antoinette, an intimate reflection upon reality and our secret fantasies arises through vintage velvets and embracing textures. The romantic dreamer reshapes its personal story defying gender norms and conventions with an unusual juxtaposition of elements. A new kind of irreverent sophistication is told through cashmere blends, furry effects and cotton candy looking yarns.



Live Sense



Velour

MY SENSE
Nm 3700 3
75% Organic CO - 10% WS
14% PA - 1% EA



FIVE SENSE
Nm 3400 5
90% Organic CO - 10% WS



SEVEN SENSE
Nm 5600 7
90% Organic CO - 10% WS

MY SENSE



FIVE SENSE

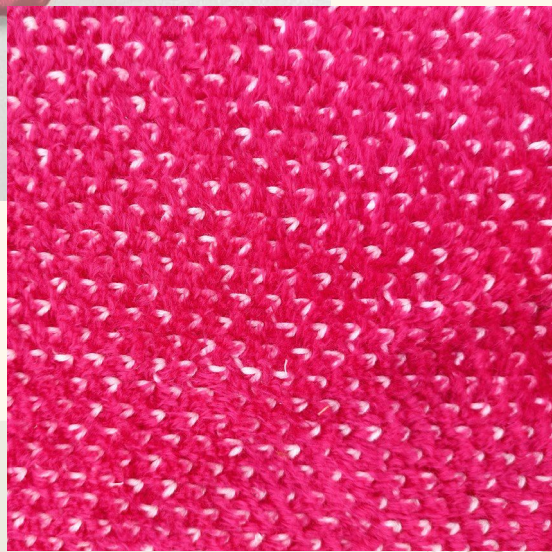


SEVEN SENSE





WELOVE



SEVEN SENSE



MY SENSE
Nm 3700 3
75% Organic CO - 10% WS
14% PA - 1% EA



WELOVE
Nm 4000 5
73% Organic CO - 27% PA



SEVEN SENSE
Nm 5600 7
90% Organic CO - 10% WS

MY SENSE



CURLY SENSE

Nm 3000 3/5
77% Organic CO - 11% WS
11% PA - 1% EA



ORGANIC SENSE

Nm 2/50 14/16
Nm 3/50 12
90% Organic CO - 10% WS



LIVE SENSE

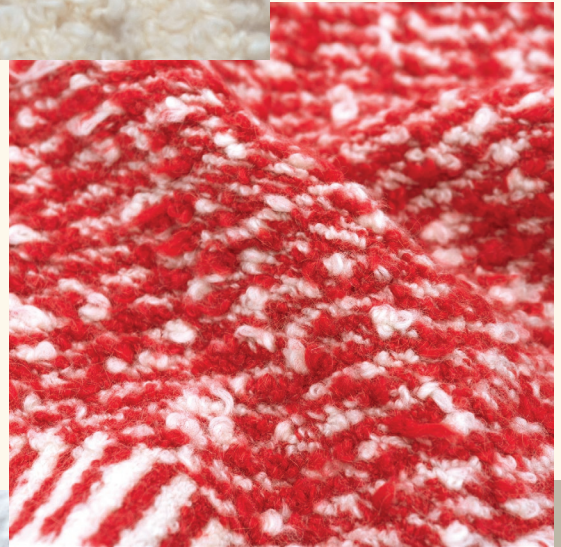
Nm 7500 5
75% Organic CO - 10% WS
13% PA - 2% EA



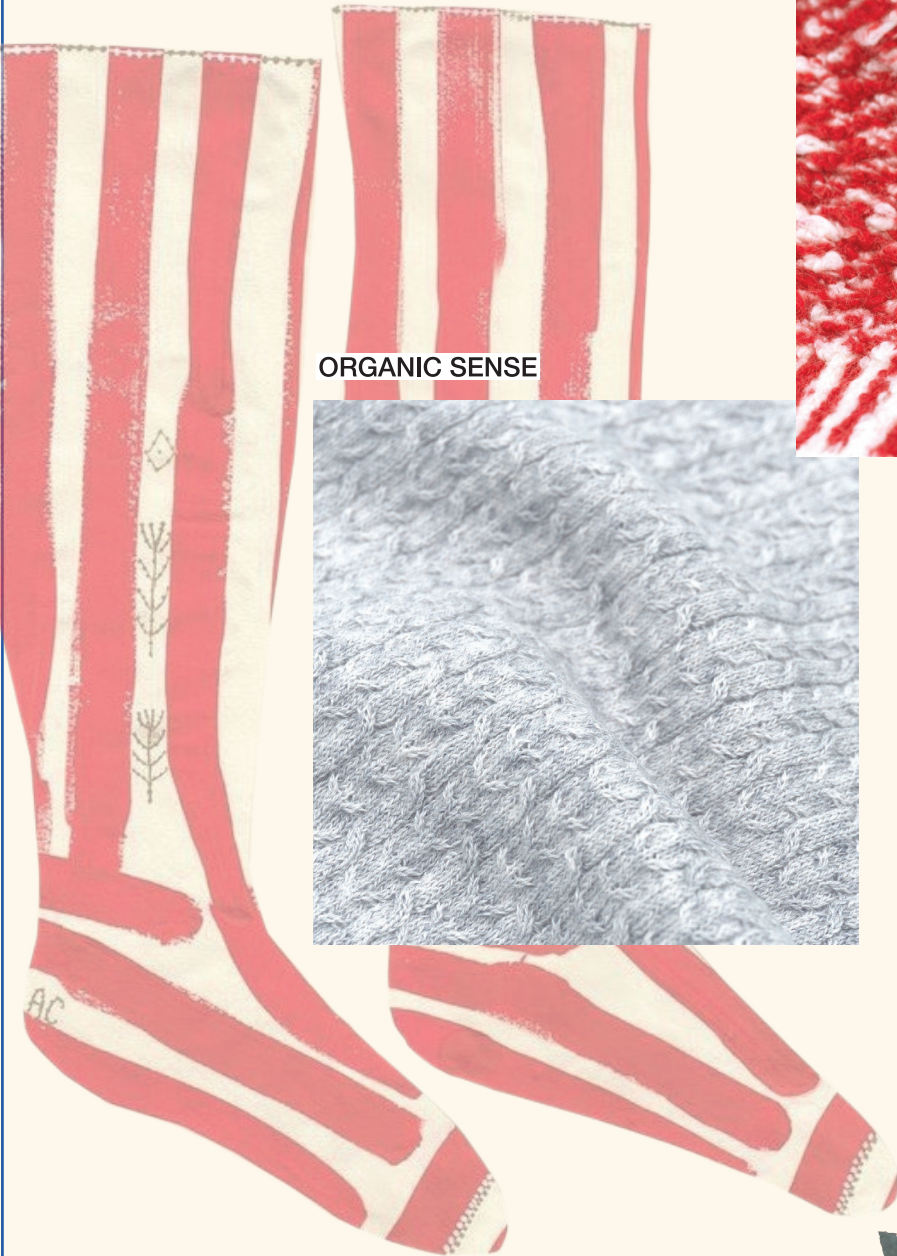
CURLY SENSE



LIVE SENSE



ORGANIC SENSE



COLORFUR
Nm 1700 3
70% CO - 16% PA
7% PC - 6% WM - 1% EA



ORGANIC SENSE
Nm 2/50 14/16
Nm 3/50 12
90% Organic CO - 10% WS



COLORFUR



ORGANIC SENSE

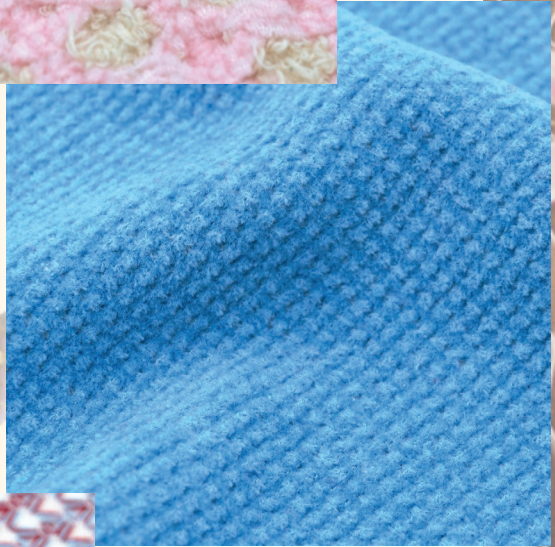




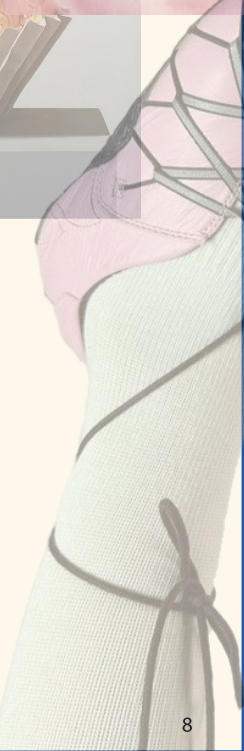
VELOUR



VELVETY



SATURN



VELOUR
Nm 6000 7
60% VI - 40% CO

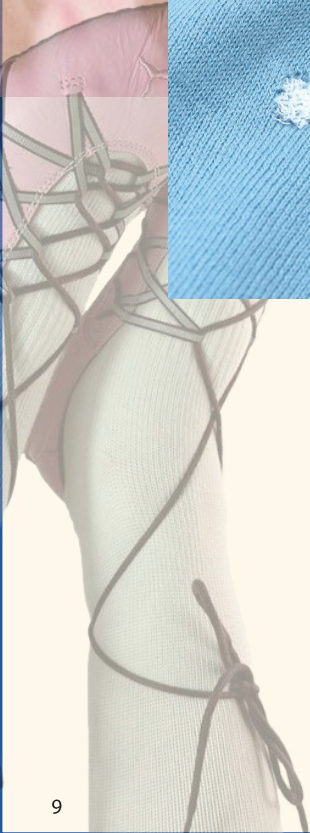
VELVETY
Nm 13500 12
100% Makò Combed CO

SATURN
Nm 3/50 12
100% Combed CO





LUNA



VELOUR

Nm 6000 7
60% VI - 40% CO



LUNA

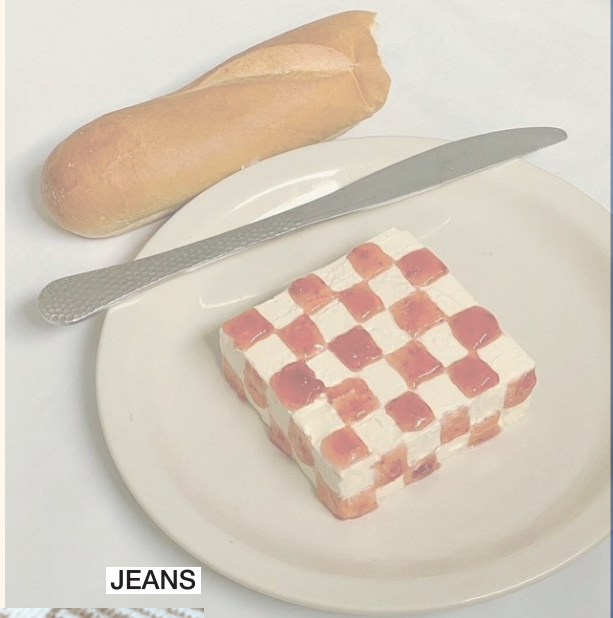
Nm 2/50 14/16
100% Combed CO



JEANS

Nm 2/34 12
100% Combed CO

VELOUR



JEANS

SUMMITS

Gorpcore · Utility · Mountainwear · Functional

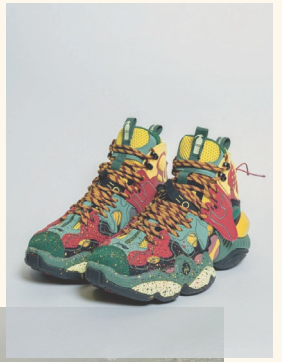


Opium · Bicolor Cotton · Persian · Joywool · Craft Merino · So Light · Bicolor Cotton · Bio Liner · Bon7

Partendo dalla tendenza del *gorpcore*, la funzionalità dei capi outdoor si mescola con tartan e trecce aran tradizionali. Le tecniche classiche si fondono all'attrezzatura performante e si uniscono mischie di merino a colori vibranti sportivi. Come l'outerwear si fonde allo streetwear più trendy, gli effetti fiammati e organici si mischiano a ciniglie sostenibili e filati soffiati.

Starting from trending gorpcore, we blend the functionality of outdoor garments with traditional tartans and aran cables. Classical techniques are mixed with performance gear and merino blends are paired with more vibrant colors. Just like a fusion of outerwear into trendy streetwear, organic slubbed effects are mixed with sustainable chenille and airy yarns.

Hug Merino



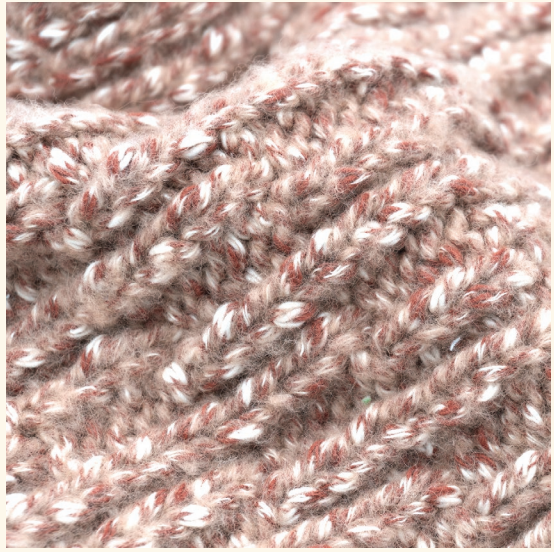
Craft Merino

CRAFT MERINO

Nm 1300 3
75% Organic CO
25% RWS Extrafine Merino WO



CRAFT MERINO



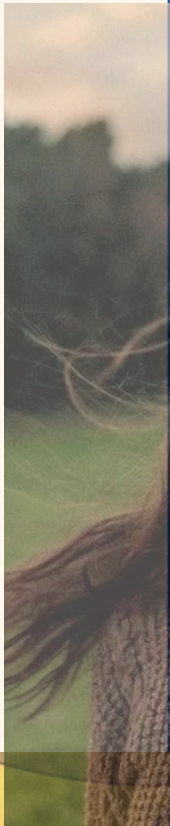
PERSIAN

Nm 6000 7
100% Organic CO

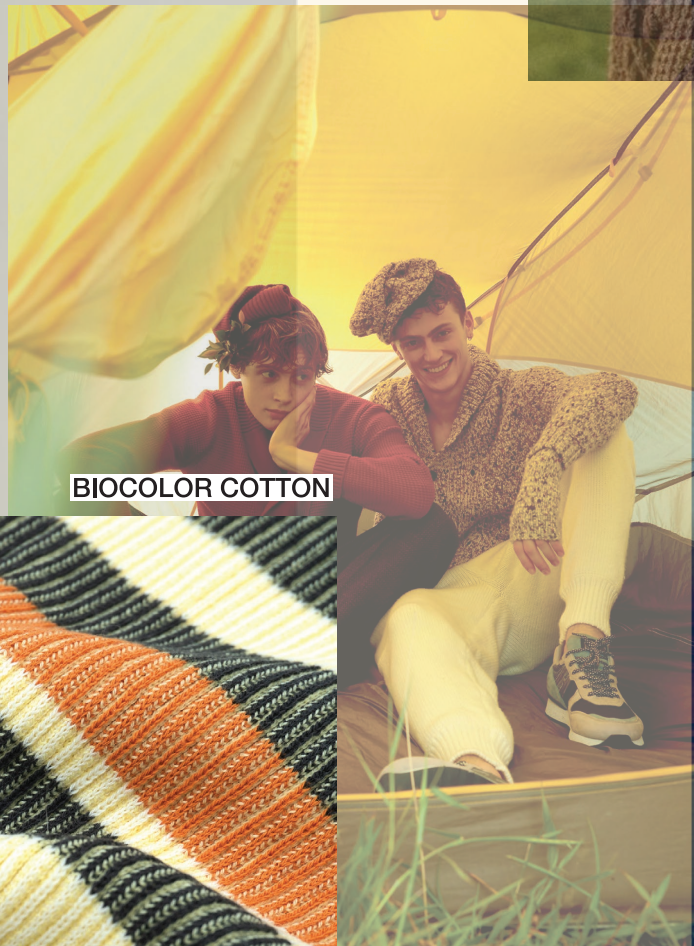


BIOCOLOR COTTON

Nm 2/50 14/16
Nm 3/50 12
100% Organic Combed CO



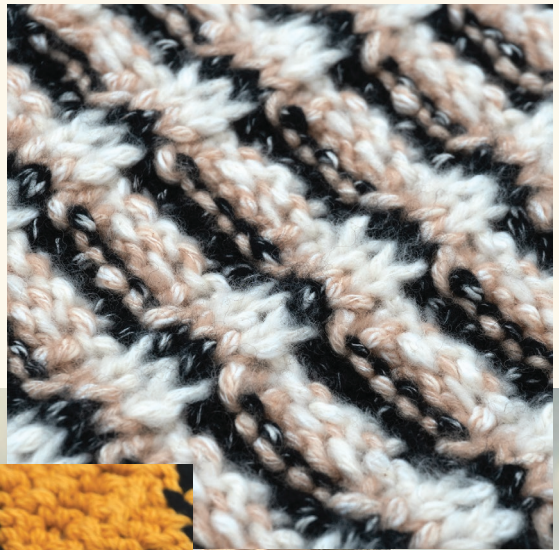
PERSIAN



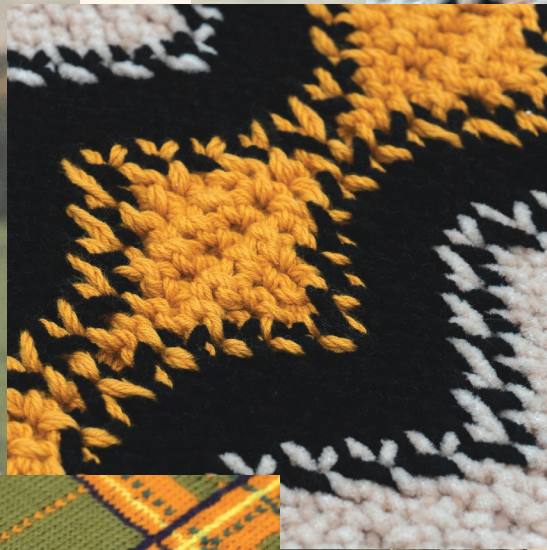
BIOCOLOR COTTON



CRAFT MERINO



OPIUM



BIOCOLOR COTTON



CRAFT MERINO

Nm 1300 3
75% Organic CO
25% RWS Extrafine Merino WO

OPIUM

Nm 2000 3
100% Organic CO

BIOCOLOR COTTON

Nm 2/50 14/16
Nm 3/50 12
100% Organic Combed CO



HUG MERINO

Nm 2700 3
50% Organic CO
50% RWS Extrafine Merino WO



SO LIGHT

Nm 4000 5
65% Long Staple Organic CO
35% PA



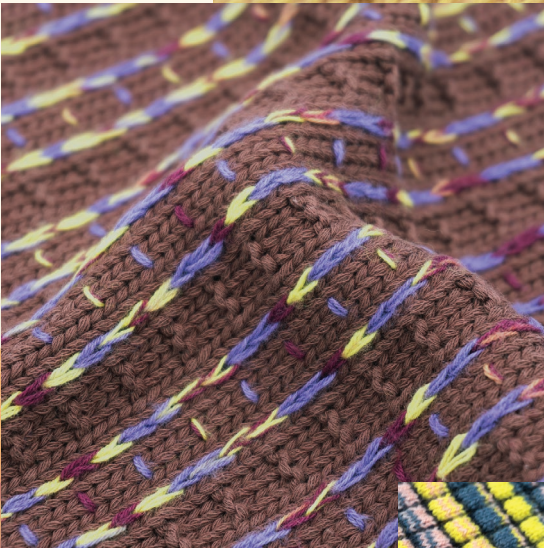
BIO LINER

Nm 2/50 14/16
Nm 3/50 12
80% Organic CO
20% RWS Merino WO

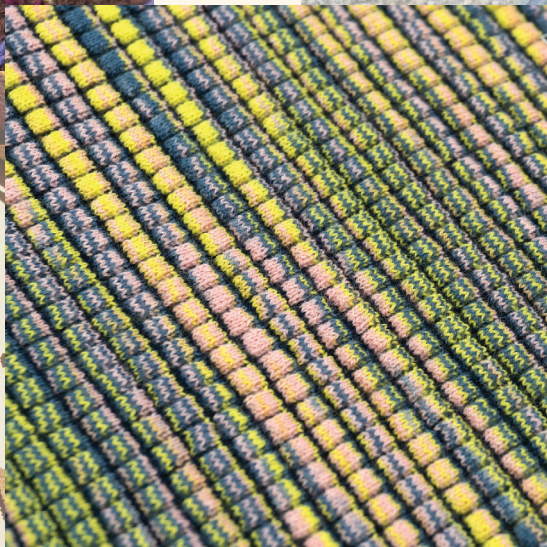


HUG MERINO

SO LIGHT



BIO LINER





HUG MERINO
 Nm 2700 3
 50% Organic CO
 50% RWS Extrafine Merino WO

HUG MERINO



BIO LINER
 Nm 2/50 14/16
 Nm 3/50 12
 80% Organic CO
 20% RWS Merino WO

BIO LINER



JOYWOL
Nm 1700 3
85% Organic Combed CO
15% RWS Merino WO



BONWOOL
Nm 3/50 12
85% Organic Combed CO
15% RWS Merino WO



JOYWOL



BONWOOL

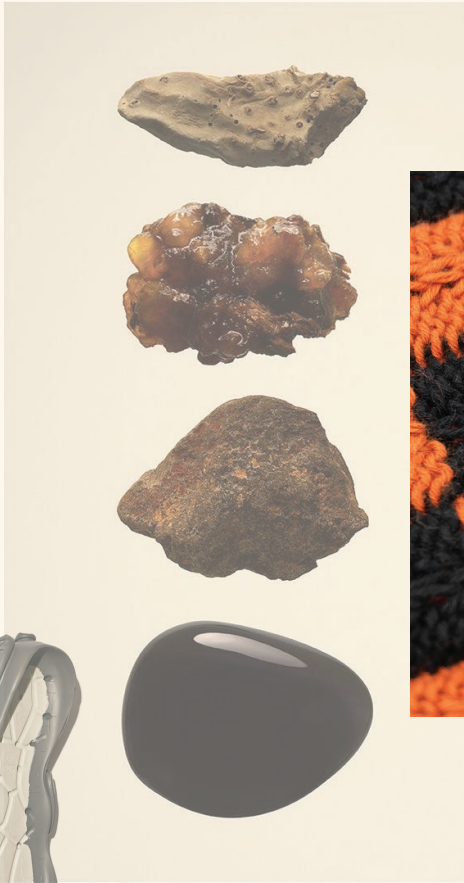




BON5
 Nm 3100 5
 85% Organic Combed CO
 15% RWS Merino WO



BON7
 Nm 5400 7
 85% Organic Combed CO
 15% RWS Merino WO



BON5

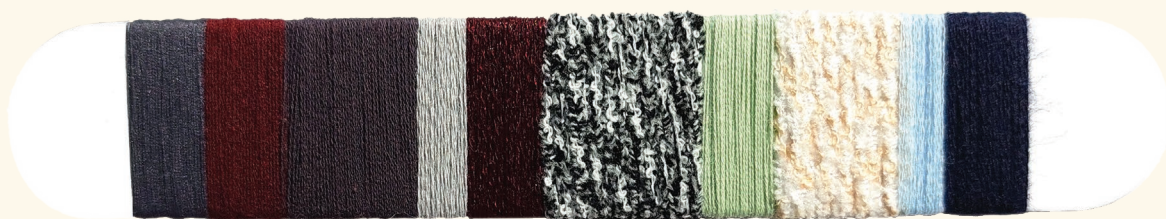


BON7



WORK SPACE

Space Age · Corporate · Enterprise · Retrò



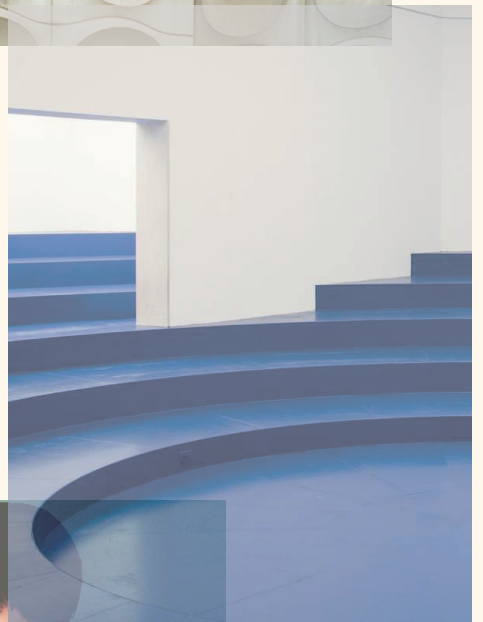
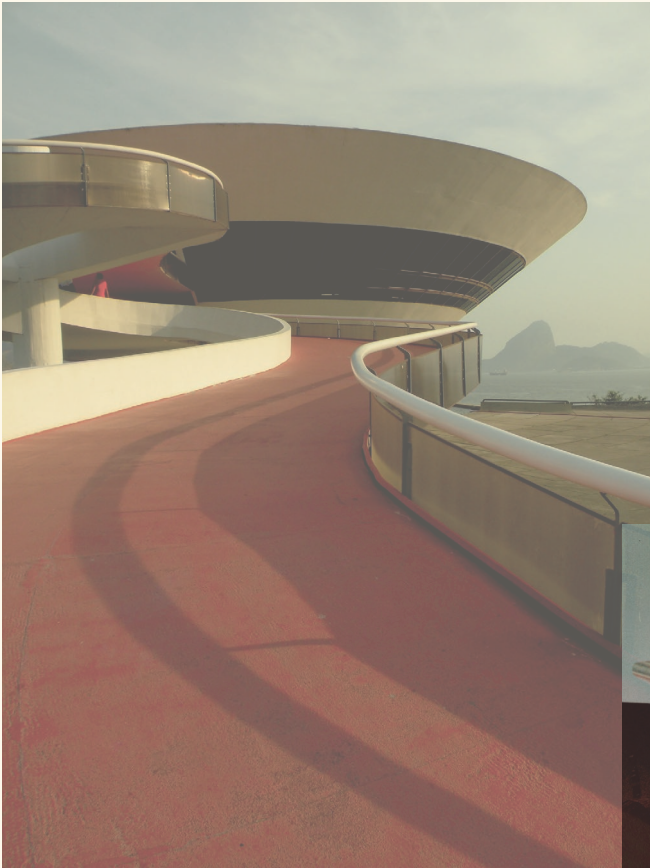
Replay · Feelfine · Naturplus · Naturtech Grs · Dolomia · Feelfine · Dolomia · Velato · Goodwool Rws

Un luogo emerge tra passato e futuro, ispirato allo Space Age degli anni Sessanta e al minimalismo dei Novanta. Con un focus sul luogo di lavoro, si immagina una multinazionale futuristica come un'ipotetica stazione intergalattica, definita da dettagli architettonici e uno stile retrò. Maglie tecniche sottili come seconde pelli sono uniformi futuristiche, accoppiate a effetti tridimensionali come scolpiti da macchine 3-D.

A place emerges between past and future, inspired by sixties Space Age and nineties minimalism. With a focus on the workplace, we imagine a futuristic corporate firm as a hypothetical intergalactic station, defined by architectural details and a retro vibe. Technical knits in fine gauges as second skins are futuristic uniforms, coupled with tridimensional effects as sculpted with 3-D printing machines.



Dolomia



Feelfine



FEELFINE



FEELFINE



FEELFINE

Nm 2/100 18

Nm 3/100 16

Nm 4/100 14

Nm 5/100 12

100% Long Staple Organic CO





FEELFINE



FEELFINE



FEELFINE

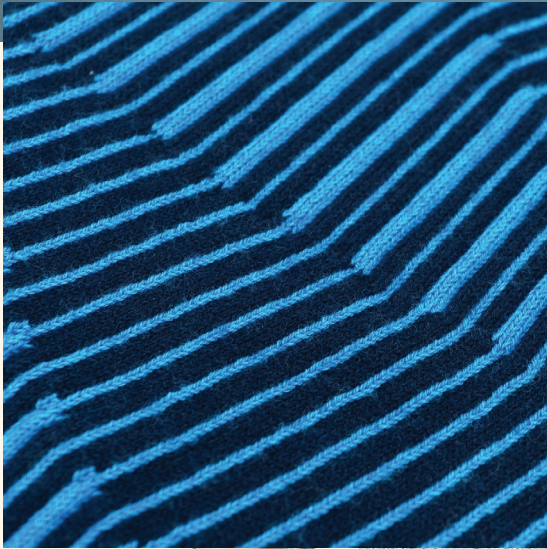
- Nm 2/100 18
- Nm 3/100 16
- Nm 4/100 14
- Nm 5/100 12

100% Long Staple Organic CO





GOODWOOL RWS



NATURPLUS



GOODWOOL RWS



GOODWOOL RWS

Nm 2/50 14/16
 Nm 3/50 12
 80% Organic Combed CO
 20% RWS Merino WO



NATURPLUS

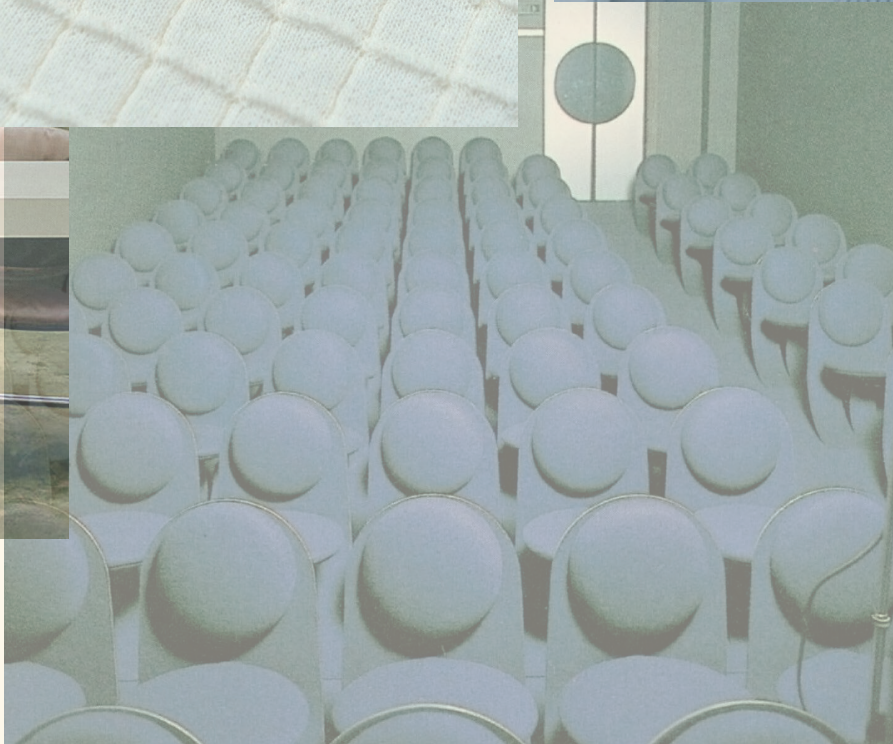
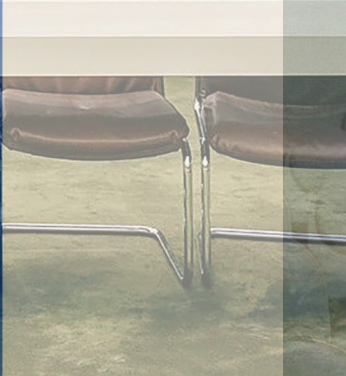
Nm 2/50 14/16
 Nm 3/50 12
 60% Recycled PL
 40% CLY LF



VELATO



VELATO



VELATO
Nm 40000 16/18
66% Organic CO
16% RWS Merino WO - 18% PA



NATURPLUS
Nm 2/50 14/16
Nm 3/50 12
60% Recycled PL
40% CLY LF



NATURPLUS



REPLAY



NATURTECH GRS



REPLAY
Nm 28000 14/16
100% Recycled PL



NATURTECH GRS
Nm 15000 12
55% Recycled PL
45% CLY LF



DOLOMIA

Nm 3800 5
47% CO - 40% VI
12% PA - 1% EA

NATURFIT GRS

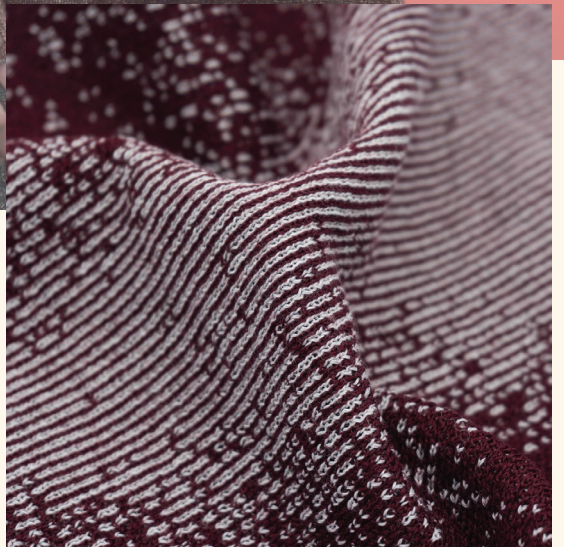
Nm 28000 14/16
53% Recycled PL
47% CLY LF



DOLOMIA



NATURFIT GRS



SENSE OF CASHMERE

Curly Sense	77% Organic CO - 11% WS - 11% PA 1% EA	3000	3/5					6
Five Sense	90% Organic CO - 10% WS	3400	5	•				4
Live Sense	75% Organic CO - 10% WS - 13% PA - 2% EA	7500	5					6
My Sense	75% Organic CO - 10% WS - 14% PA - 1% EA	3700	3					4-5
Organic Sense	90% Organic CO - 10% WS	2/50	14/16	•				6
Organic Sense	90% Organic CO - 10% WS	3/50	12	•				7
Seven Sense	90% Organic CO - 10% WS	5600	7	•				4-5

MERINO CONNECTIONS

Craft Merino	75% Organic CO - 25% RWS Extrafine Merino WO	1300	3	•				12-13
Hug Merino	50% Organic CO - 50% RWS Extrafine Merino WO	2700	3					14-15

COTTON & WOOL

Bio Liner	20% RWS Merino WO - 80% Organic CO	2/50	14/16	•				14
Bio Liner	20% RWS Merino WO - 80% Organic CO	3/50	12	•				15
Bon5	85% Organic CO - 15% RWS Merino WO	3100	5	•				17
Bon7	85% Organic CO - 15% RWS Merino WO	5400	7	•				17
Bonwool	85% Organic CO - 15% RWS Merino WO	3/50	12	•				16
Goodwool Rws	20% RWS Merino WO - 80% Organic CO	2/50	14/16	•				22
Goodwool Rws	20% RWS Merino WO - 80% Organic CO	3/50	12	•				22
Joywool	85% Organic CO - 15% RWS Merino WO	1700	3	•				16
Velato	66% Organic CO - 16% RWS WO - 18% PA	40000	16/18					23

CHENILLE & FUR

Colorfur	70% CO - 16% PA - 7% PC - 6% WM - 1% EA	1700	3					7
Dolomia	47% CO - 40% VI - 12% PA - 1% EA	3800	5					25
Opium	100% Organic CO	2000	3	•				13
Persian	100% Organic CO	6000	7	•				12
Velour	40% CO - 60% VI	6000	7					8-9
Velvety	100% Makò Combed CO	13500	12					8
Welove	73% Organic CO - 27% PA	4000	5					5

TIMELESS COTTON

Biocolor Cotton	100% Organic CO	2/50	14/16	•				12
Biocolor Cotton	100% Organic CO	3/50	12	•				13
Feelfine	100% Long Staple Organic CO	3/100	16	•				20
Feelfine	100% Long Staple Organic CO	4/100	14	•				21
Feelfine	100% Long Staple Organic CO	5/100	12	•				20-21
Jeans	100% Combed CO	2/34	12					9
Luna	100% Combed CO	2/50	14/16					9
Saturn	100% Combed CO	3/50	12					8
So Light	65% Long Staple Organic CO - 35% PA	4000	5					14

HIGH-TECH

Naturfit Grs	53% Recycled PL - 47% CLY LF	28000	14/16					25
Naturplus	60% Recycled PL - 40% CLY LF	2/50	14/16					22
Naturplus	60% Recycled PL - 40% CLY LF	3/50	12					23
Naturtech Grs	55% Recycled PL - 45% CLY LF	15000	12					24
Replay	100% Recycled PL	28000	14/16					24

